

# INFORMATION FOR PARTICIPANTS IN THE PRACTIWORK® SKILLS ASSESSMENT

## WELCOME!

Thank you for taking part in the PractiWork® assessment to find out your strengths.

We want to help you to develop personally and professionally, whatever your qualifications. The results will help you identify your strengths and areas for improvement.

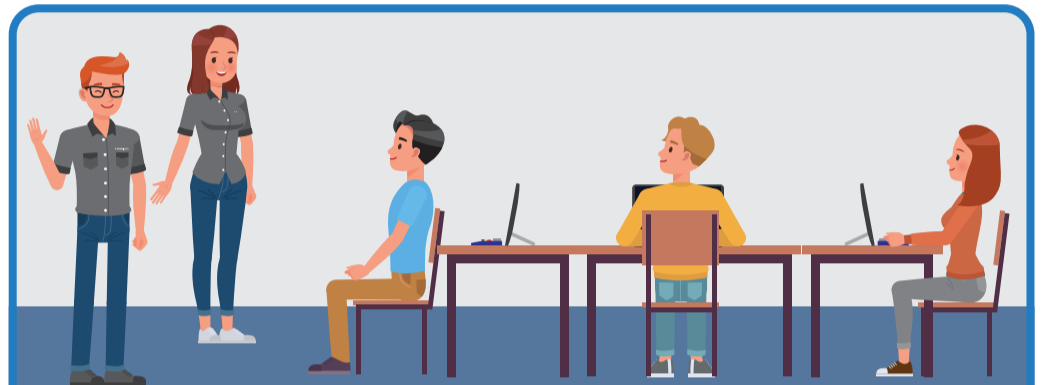
The PractiWork® technology assessment includes a measurement of your individual skills, abilities, job preferences and work interests in a variety of areas using on-site computer tools.



## WHAT TO KNOW ABOUT THE MEASUREMENT

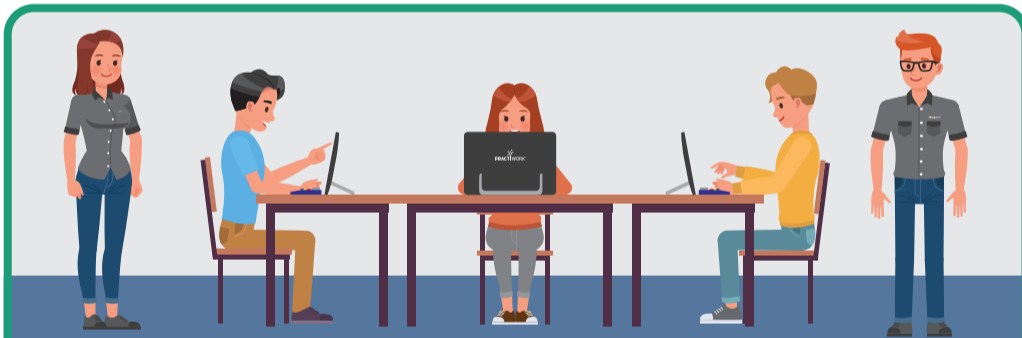


- Participation in the assessment is voluntary and **free of charge**, with any costs borne by the organiser.
- Before starting the assessment, you have to fill in the attendee sheet and the consent form. If you are under 18 you'll have to bring your parent's or caretaker's consent.
- During the assessment, **anonymous data** will be recorded, on the basis of which PractiWork Ltd. will process, analyse and evaluate the data and compile the result sheet.



- The assessment and evaluation is **not a medical examination** or treatment and has no therapeutic effect.
- The results of the assessment do not entitle you to any benefits and are **not binding on you**.
- The results and the contents of the result sheet record the results of specific measurements of ability as facts.

## THE MEASUREMENT PROCESS



- The assessment takes approximately **3 hours**.
- During the assessment you will be asked to complete a variety of different tasks.
- You will see detailed instructions for the tasks to be performed on a computer screen.
- Please read all instructions very carefully. If you have any questions, please do not hesitate to contact the measurement leader.



- Please try to solve and answer the questions to the best of your knowledge!
- While you are solving the tasks, the computer will indicate when you can take a break. The break lasts for 5 minutes.

## IMPORTANT INFORMATION ABOUT PARTICIPATION



Only persons who are not under the influence of mind-altering drugs may take part in the assessment!



If you are suffering from an infectious disease, please do not attend the assessment, but inform the organiser!



Do not eat or drink near the equipment! Do not keep food or drink on the table next to the equipment! You will be able to eat and drink refreshments during the break.



Turn down your phone. Do not use your phone during the assessment.



If you need any **visual aids** for reading (**glasses, contact lenses, etc.**), be sure to bring them with you!



If you need a **hearing aid**, be sure to bring them with you!



If you need **ongoing medication** and may require medication during the expected duration of the assessment, bring the required dose with you.



**Participants with diabetes** please take into account the duration of the assessment! Meals can be taken during the 5 minute breaks.

THANK YOU FOR YOUR COOPERATION!